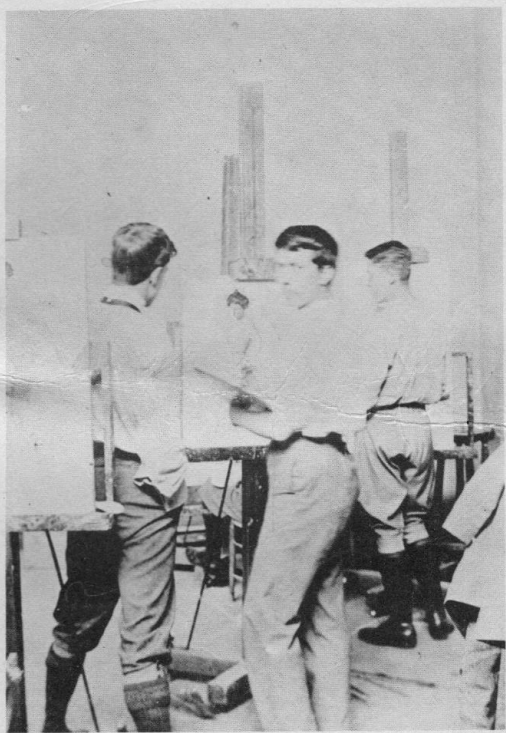


*THE
HERKOMER
ART
SCHOOL
1883-1900*

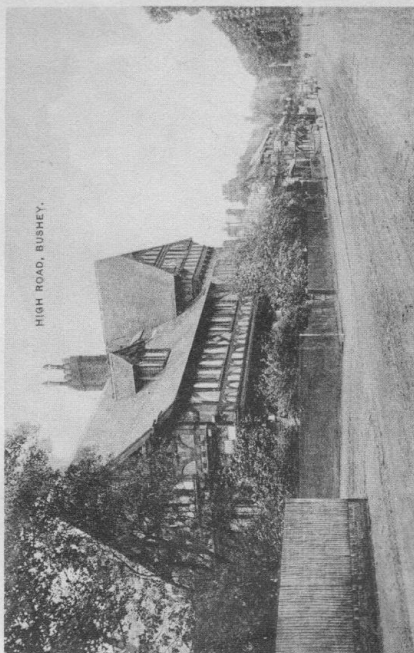
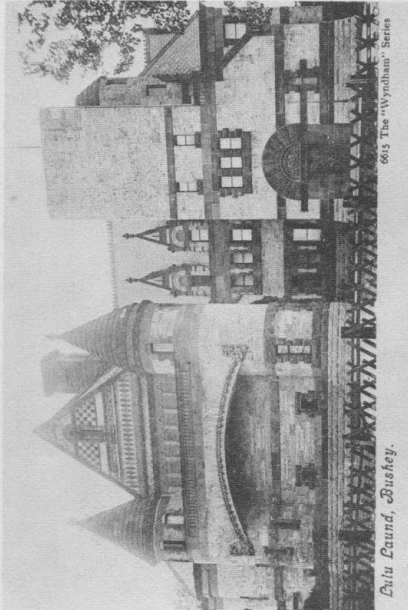


*by
GRANT
LONGMAN*

Price £1.00

*The
Herkomer
Art
School
1883-1900*

*Bushey
Reference
Paper
Number 1*



From an Invitation Card to an Exhibition of Works.

GRANT LONGMAN

© Grant Longman MARCH 1976

THE HERKOMER ART SCHOOL (the first 18 yrs).

The Herkomer Art School at Bushey, in Hertfordshire, was started in 1883 and was unique in that it was the first school of art and artists' colony of any significance founded in a rural village. The school lasted until 1904, when it ceased because of financial troubles. But it was immediately succeeded by two other rural art schools in Bushey and had inspired others in Dorset and Cornwall, all by 1905 led by ex-students of Professor Herkomer. The ever widening ripples of the splash that Herkomer created by opening the school can scarcely now be detected: a hundred years later they are faint and easily missed. Nevertheless a school that in its first 18 years was attended by over 500 students, many of whom became successful professional artists, cannot be dismissed as of no consequence. Indeed it may have received less acclaim than is its due because of the eddying tides of artistic fashion. Herkomer says that he did not seek to impose a personal school style on his students but that he hoped that each would discover his or her own true artistic expression. In fact many of the students were already fairly well formed artists before they came to the school. The attraction to Bushey may have lain not so much in the tuition as in the general arts environment. In its day it may have been rather progressive. Some students like Lucy Kemp-Welch and Rowland Wheelwright stayed to inherit the mantle from Herkomer. Others, like William Nicholson, reacted against the school. Whichever happened it achieved its founder's aim in being a catalyst in the lives of up and coming artists.

In this research aid I have alphabetically listed all the students who attended the Herkomer Art School in Bushey from 1883 to 1900. The spelling of the names in the Herkomer School Annual Reports is a little uncertain and has been corrected where possible but those researching lesser known students should be prepared for spelling errors copied from the source documents.

The date following the name is the year in which the student first attended the Herkomer School. How long each individual stayed is not known, but 2 years is a likely average. The code letters following the name give some indication of the artistic success of the student in later life. Thus:-

- A - Special mention, in those Herkomer School Annual Reports which have been traced, as having exhibited work whilst at the school or soon after (i.e. up to 1900).
- B - Mention in 'Who's Who in Art' in one of the first three editions, viz. 1927, 1929 and 1934.
- C - Mention in other books, articles, MS sources etc. (including select bibliography q.v.).
- D - Mention in "Allgemeines Lexicon der Bildenden Künstler" by Dr. U. Thieme and Dr. F. Becker (1907-1947).
- E - Mention in "Künstler-Lexicon des XX Jahrhunderts" by Hans Vollmer. (1953-1962)
- F - Mention in "Dictionnaire des peintres, sculpteurs, dessinateurs et graveurs" by E. Bénézit (edition of 1966).

The difference between C and B D E and F is that C records that some other information about the person has been found - however

trivial this may be: B D E and F record artistic achievement of some sort. An entry in lower case (e.g. f) indicates that identification is not certain but that the reference may relate to the student. There has been no attempt to fully research all these students. It would be a lifetime's work and would defeat the object of this publication which is to make available a handlist of the Herkomer student connection and hopefully a few leads for other researchers to follow up. Already it would be impossible to set out fully all the miscellaneous references that have been traced without inflating this booklet beyond its intended scope. This restricted scope is bound, I suppose, to give an impression of some under-estimation of achievement, particularly for any artists who emigrated. However in the select bibliography that follows those artists referred to are listed in parenthesis.

The available sources are so vast that no attempt has been made to scour through even such obvious mines of information as the Art Journal, Studio Magazine, or exhibition catalogues for the Royal Academy and elsewhere. Many such references can be traced from the main sources D. E. and F.

The additional notes against particular artists are intended as helpful pointers for the researcher. It seems best to launch the handlist - brief but probably otherwise unobtainable - and hope that readers and users will in due course contribute details for the improvement of the notes. Correspondence will be welcome.

The last section of this booklet contains a transcript of the Herkomer School Prospectus for 1890-91. In this it is interesting to draw attention to the paragraph insisting that prospective students should be intending to make Art a profession and also barring married ladies and ladies over 28 yrs.

The school lasted another four years after 1900 until 1904 and it is intended to bring out a second research aid to cover the students of these years and the various schools and developments that succeeded it in Bushey in the early 20th century.

Grant Longman,
October 1975.

The cover picture shows students in the life class of the Herkomer Art School at Bushey c. 1900. It is reproduced here by kind permission of Mrs. A. R. Chewett.

THE HERKOMER ART SCHOOL STUDENTS

1883-1900

Male Students

Adams, William Dacres	1888	ABCDEF
Airy, Arthur L.	1896	
Alexander, Herbert	1893	ABCDEF
Anderson, Robert	1883	
Anthony, Ripley O.	1887	ABC
Arnot, Guido	1897	f
Ashton, Stanley	1900	
Ashton, William	1896	D F
Australian artist		
Baird, Nathaniel Henry John	1886	ABCD F
Balfour, James S.	1887	
Balshaw, Fred	1889	A C
Banajee, Dhunbai F.	1892	
Barr, James	1891	
Becker, Henry	1884	A EF
Bedford, Percy	1892	
Bennett, William B	1895	C
died c.1914-18.		
Berg, Robert Jens	1891	
Bibby, William Cardwell	1885	A
Binyon, Bertram	1894	
Bird, Clarence	1890	
Bird, William	1892	
Blackden, Hugh C.	1894	
Blount, Godfrey	1884	
Bogle, William Lockhart	1885	A C
Booth, John L.C.	1896	
Borough-Johnson		
see under Johnson		
Braden, Karl	1887	A C F
Bridgewater, Henry Scott	1885	ABCDEF
Briggs, Thomas	1883	
Brooke, John William	1890	A F
Brown, Arnesby	1888	ABCDEF
m. Mia Edwards (q.v.)		
Burns, Cecil Laurence	1883	A CDEF
(Leonard?)		
Butler, William E.	1892	A
Buxton, Robert H.	1891	AB EF
Campbell, John Wallace	1891	
Caton Woodville		
see under Woodville		
Chewett, Albert Romney	1900	C
Ching, Cyril C.	1894	C
Clark, Sheldon A.	1892	
Clemens, Matt. H.	1892	
Clouston, Robert S.	1893	CD
Clunas, William Randall	1887	
died before 1894		
Collins, Walter R.	1892	e
Cooper, Claude C. Du Pre	1897	
Cowie, James	1887	B F
Crawford, Thomas Hamilton	1886	ABCD
Crick, Thomas M.	1894	b
Crookes, George E. W.	1895	
Crosse, Edwin Reeve	1889	A
Crossley, Sam B.	1897	
Cullen, Frank	1887	
Cullen, Fred	1886	
Curtis, George D.	1890	A
Cutting, Harry Frank	1891	
Danby, Thomas H.	1895	
Davis, Stuart George	1891	A D F
Davy, Horace William	1900	C
Day, William C.	1891	A D F
Deacon, Allan	1888	A D f
De Csarada, Arthur	1895	
De Gessler, Nicholas	1894	
Desmond, Creswell H.	1895	BC EF
D'Urban, William H.	1883	C
died before 1891		
De Watteville, Bernard C.	1897	
m. Florence E. Beddoes?(q.v.)		
Drummond, Julian Edward	1890	D F
Dutton, J. T. Harrison	1892	A

Easom, Alfred,	1891	
Eddison, Samuel James	1887	A
Edwards, Frank George	1883	
died before 1891		
Elias, Arthur E.	1892	A
Eliot, Walter K.	1897	
Emmerson, Hugh Percy	1890	
Emsley, Walter	1895	C
Evans, Wilfrid M.	1884	A CD F
Featson, Percy Hutton	1897	BC Ef
cartoonist "Poy"		
Fedden, Arthur Romilly	1896	BCDEF
Fidler, Harry	1893	ABC EF
m. Laura B. S. Clunas(q.v.)		
Fischer, Carl	1889	A
Fitzerland, Arthur	1884	
Flach, Charles	1889	A D F
Flagg, James M.	1898	EF
American artist		
Flower, Clement B.	1896	
Flower, Marmaduke Clem. W.	1886	A CD F
Flower, Noel	1896	F
Foley, Edward	1894	
Ford, Henry Justice	1884	ABCDEF
Fowler, Francis Hugh	1900	
Frazier, Kenneth	1887	DEF
American artist		
French, Cecil Francis	1898	
Furse, John H. Monsell	1890	A D F
Galpin, William Dixon	1883	
Gandy, Charles	1896	
Garner-Richards, John B.	1900	
Garnett, Alfred P.	1894	
Gear, A. Handel	1892	A
Gibbon, James M.C.	1894	
Gibbs, Herbert Edward	1895	B E
Gledstone, Robert	1894	
Goffey, Harry	1894	ABC E
Goldstein, Wilhelm von	1899	
Graham, Frederick W.	1895	
Grant, Lewis John M.	1900	C
Graveley, Percy	1886	A
Gyngell, Albert Edmund	1891	A C
S. African artist		
Haddon, Arthur Trevor	1889	AB DEF
Hamilton, Thomas C.		
see under Crawford		
Harcourt, George	1889	ABCDEF
m. Mary Lascelles Leesmith(q.v.)		
Harcourt, William	1894	C
Harley, A. Ernest	1896	
Harris, Henry P.	1886	C
Haughton, Benjamin Alfred	1889	ABCD F
m. Janet M. Mason(q.v.)		
Heath, Frank Gascoigne	1897	B E
Henderson, William	1883	ABC
Herald, James W.	1891	
Hewlett, Arthur Leedham	1883	A C f
Hill, Rowland Henry	1895	B DEF
Hinchliff W. Kendall	1891	d f
cf Hinchliff, Woodbine K.		
Hirsch, Otto	1892	A
died before 1895		
Hirst, Norman	1885	ABCD F
Hitchings, Thomas Neville	1888	
Hodgkinson, Louis	1894	
Hodgson, Edward S.	1894	C
Holgate, Thomas W.	1895	
Holmes, Marcus Henry	1899	B EF
Hort, Frederick A.	1897	
Hullgren, Oscar	1893	DE
Swedish artist		
Hurd-Wood, Fergus	1893	
Hutchinson, Francis L.	1896	
Ibbetson, Ernest	1896	
Inchbold, Stanley	1891	ABC EF
Izard, Edwin	1883	C F

Johnson, Edward Borough m. Esther George (q.v.)	1886	ABCDEF
Kearne, Lindsay	1885	
Kenealy, Noel Byron	1885	
Killminster, C. Gordon	1894	
Kimbrough, Frank Richmond	1898	D F
American artist		
King, Edward G.	1895	
Kitson, Robert L.	1893	
Knight, Valentine	1891	
Knowles, F. McGillivray	1893	A DEF
American artist		
Koch, Walther	1893	A Cd f
Kortright, Henry Somers	1897	BCDEF
Leader, Benjamin E.	1898	
Le Cornu Philip d'A from the Channel Islands	1899	C
Leigh, Edward	1894	
Leslie, Peter	1897	BCDEF
Lisle, William H.	1896	
Llewellyn, William L.	1898	
MacDonald, Alexander	1889	A
Maclure, Charles	1883	
Maitland, E. Fuller	1888	C
Marsh, Charles F.	1886	d
Massey, Henry Gibbs	1889	ABC E
m. Gertrude Seth		
Martin, John	1895	C
McLernon, William J.	1892	
Meade, Arthur	1890	A D F
Mecredy, Seymour Varley	1898	
Miller W. Fisher	1895	
died before 1902		
Moll, Leo	1895	
Monier - Williams, Stanley F.	1890	
Moore, Ernest	1893	b e
Moran, Henry	1892	
Morris, Charles Greville	1888	A CD F
Mostyn, Tom E.	1893	ABCD F
Mulock, Frederick Charles	1886	C
Nance, Robert Morton	1893	BC
Neville, Herbert Waterford	1893	
Nicholson, William Newzam P	1888	BCD F
Niemann, Oscar	1891	
died before 1895		
Northcote, Percy B	1887	
O'Connor, Francis H.	1892	
Ogilvie, Frank S.	1888	A C
Owtram, Robert L.	1889	A
Partington, Richard L. cf. Partington, Richard Langtry	1887	A d f
Paul, Paul P. lived in Greece	1897	C E
Pointer, G. Henry	1891	
Poole, Alexander	1888	
Potter, William H.	1897	
Powles, Lewis Charles	1888	AB DEF
Prescott, Claude died before 1902	1895	
Prussmann, William R.	1888	
Puckett, Egmont S.	1898	C
Ramsden, Fred F.	1886	
Randall, Richard J.	1893	
Reid, William A.	1890	
Rice, Frederick Arthur	1891	A
Rolt, Vivian C.	1897	BC E
Rowley, James S.R.	1892	
Ryan, Charles J.	1890	A D

Sanderson, Charles E.	1891	A
Sewell, William A.	1897	C
Shaw, Clement A.	1892	
Sillem, Charles	1883	
Simpson, Charles	1894	DEF
Skinner, Edward F.	1885	C
Smart, Edmund Hodgson	1895	B E
Smith, Malcolm	1899	
Soeborg, Knud	1892	f
Soltmann, Rudolph	1897	
Soord, Alfred U.	1890	A CD F
Spence, Harry	1883	A CD F
Stamp, Ernest	1890	ABCD F
Stephenson, George	1895	
Sternberg, Frank	1885	CD F
Stott, J.N. Stanhope	1898	
Stuart, Louis	1895	
Swinton, George C.	1894	D
Sydall, Joseph	1887	C
Symes, Ivor I.J. m. Mabel Gear	1896	
Talmage, Algernon M.	1892	ABCDEF
Taverner, William E.	1896	
Taylor, Ernest	1888	Ab d f
Teasdale, Percy Morton	1891	ABCD F
Theobald, Johannes George	1896	
Thomas, Percy E. Flora (sic)	1891	f
Thompson, Charles H.	1892	A
Titcomb, William Holt Yates	1883	ABCDEF
Tollemache, Randolph S.	1886	e
Tonge, H. Asheton	1891	
Topham, Edward C.	1888	C
Travis, Arnold	1899	A
Vere Smith see under Wehrschmidt, D. A.		
Walker, Edward Bent	1893	C
Wallis, Hugh	1891	A C
Wehrschmidt, Daniel A. m. Marie L. Norie (q.v.)	1883	ABCD F
Wehrschmidt, Emil	1888	A
West, Eaton John D.	1895	
Wethered, Herbert Newton	1893	
Wheelwright, Rowland m. Jane Stewart, sister of H. Stewart (q.v.)	1891	ABCD F
White, Albert Edward	1891	
White, A. Norman	1892	
White, Ernest A.	1897	
White, Reginald F.	1896	
Whiteley, John W.	1890	A C
Whitfield, Richard W.	1891	
Widgery, Frederick James cf Widgery, Fred John	1883	d f
Wilkinson, Albert	1893	
Willson, M.A. Hilliard	1891	
Wilson, David R. cf David Forrester Wilson	1883	f
Wontner-Smith, W. Charles cf W.C. Wontner	1891	cd f
Wood, Thomas M.	1898	
Woodville, Anthony Caton	1898	B E
Woolston, George H.	1895	
Work, George O.	1892	A D
Wheelwright J.S. c. 1900 - og.		
Yockney, Kenneth A.	1900	
Young, Robert	1895	
Young, William Blamire m. Mabel Sawyer, sister of Amy Sawyer (q.v.) Australian artist	1893	CD F

FEMALE STUDENTS

Adkins, Harriet	1899		F	
Aitken, Lily Gair	1899			
Alderson, Isabel F.	1899			
Alderson, Violet M.	1899			
Aldis, Maud	1891			
Allan, Kate G.	1885			
Allnutt, Emily	1894	B	Ef	
Alton, Bryanna	1894			
Ambler, Esther	1892		F	
Ashford, Edith M.	1883	A C	F	
Atkins, Gertrude	1898			
Atkinson, S. Mildred	1898			
Ayrton, Mabel	1895			
Barham, Sybil	1899			
Barnard, Gertrude	1890		F	
Barnard, Maud O.	1886	C		
Barry, Edith M.	1886	A C	F	
Barter, Gertrude M.	1887	C		
Barton, Ellen G.	1897			
Bate, Emily Spence				
see under Spence-Bate				
Batley, Daisy E.	1892			
Beddoes, Florence E.	1898			
m. B. C. DeWatteville(q.v.)				
Bell, Lilian	1895			
Benham, Maude	1894	A		
Bennett, Ethel	1891			
Bennett, Gertrude H.	1897			
Benson, Mary K.	1888	A	F	
Biggs, L. Evelyn	1888		e	
Bird, Constance	1896	B	EF	
Blankley, Alice	1899			
Boden, Lizzie	1888	A		
Boulton, Muriel C.W.	1899		E	
Bowley, May	1888			
Bradley, Nellie	1894			
Brewer, Amy Cobham	1886	A C		
Bridges, May	1899			
Bristow, Lily	1889	A	F	
Browne, Kate	1886			
Buckingham, Ethel	1889	A C		
Bullock-Webster, Violet	1894			
Buxton, Amy L.	1889	A		
Bynnes, F. A. Muriel	1892			
Camp, Isabel	1883			
Canning, Florence M.	1894			
Carter, Christian	1897			
Carter, Hilda	1893			
Cary, Hessie	1891			
Cawker, Maud	1892			
Cazalet, Agnes T.	1899			
Chatteris, E. Mary	1891			
Chew, Beatrice H.	1899			
Cholmeley, Margaret	1890	C		
Clark, Ida Crofton	1897			
Clarke, Jessie B.	1886			
Clarke, Muriel Grace	1900			
Clarke, Pollie	1888	A C		
Clay, Lillie	1897			
Clink, Matilda J.	1891			
Clunas, Laura B. S.	1889	b		
m. H. Fidler(q.v.)				
Cobham-Brewer				
see under Brewer				
Colles, Elizabeth C.	1893	b	f	
Conder, Helen E.	1892	B		
Condie, Ella G.	1884			
Cooper, Catherine	1895	B		
of Kate Cooper				
Cornish, Margaret E.	1897			
Cove, Helen	1889			
Cowderoy, Kate E.	1899	CD	F	
Coxeter, Constance	1895		f	
F says Lucy Coxeter:Herkomer School				
Cracknell, Alice L.	1899			
Cree, Alice C.	1893			
Cridland, Helen	1883	A C		
Crutwell, Grace	1900			
Cumming, Constance H.	1893	C		
Curtis, Mabel	1894		f	
Curwen, Emily A.	1897			
Dallin, Hetty Isabella	1900			
Darnell, Dorothy D.	1899			
Davies, Mary L.	1898			f
D'Avigdor, Estelle	1886	A		
De La Pasture, Helen M.	1900			
De Montmorency, Lily M.	1896			
Dennis, Alice	1886	AbC		
cf Ada Dennis				
Dockerill, Margaret	1895			
Donald-Smith, Helen	1885	ABC	F	
Durie, Edith	1896			
Durrant, Dorothea	1899			
Eames, Elsie	1894			
Edwardes-Jones, Laura	1883	A		
Edwards, Mia	1889	A		
m. J. A. Arnesby Brown(q.v.)				
Esdaille, Grace E.	1898			
Estcourt, Florence J.	1889	A		
Evans, Molly B.	1892			
Ewan, Frances E.	1891	A		
Eyres, Myra	1885			
Fairbairn, Hilda	1889	A	D F	
Fairholme, Adele	1889			
Fawsett, Constance M.	1898			
Fisher, Janet C.	1888	A	F	
Fithian, Edith S.	1889	A		
Flachfeld, Annie	1898			
Ford, Frances	1897			
Freeman, Mary Winifride	1888	A	CD F	
French, Margaret	1895			
Gardiner, Annette	1895			
Gee, Lucy	1894			
George, Esther H.	1892	Ab	D F	
m. E. B. Johnson(q.v.)				
Gerstenberg, Leonora	1885			
Gibbons, Georgina C.	1892			
Giles, Alice M.	1890			
Gillham, Rachel W.	1900			
Gisborne, Edith M.	1890			
Godsal, Mary	1883	A	C f	
Goitein, Emma	1898			
Goodman, Helen C.	1891			
Goodman, Josephine C.	1891			
Gordon, Hilda May	1895			
Gorham, Edith	1885			
Gray, Ethel	1896	B	Ef	
Grayson, Ethel M.	1898			
Grey, Dorothy	1894			
Grierson, Constantia G.	1885			
Griffin, Ellen B.	1896			
Grigg, Edith E.	1893			
Gulland, Elizabeth	1885	ABCDEF		
Hammond, Muriel F.L.	1894			
Hankinson, Emily H.	1890			
Hanson, Gertrude E.	1896			
Hardcastle, Beatrice	1889			
Hardy, Ada Muriel	1900	B	E	
Harford, Beatrice	1891	C		
Harris, Alice M.	1889	A	e	
Hart, Elizabeth	1891	A C		
Harwood, Edith	1890	A	D F	
Hastings, Ethel	1885			
Heaton, Dorothy A.	1893			
Hellard, Beatrice	1897			
Henderson, Mary B.	1896	b	e	
Henry, Alice M.	1885	A		
Herkomer, Bertha	1886	A C		
dau. of John Herkomer				
Hesketh-Jones, Rosa K.	1899			
Hewitt, Helen	1894			F
Hickman, Evelyn A.	1888	A	C	
Higgins, Elsie	1893		C	
Hindle, Gertrude	1897			
Hinson, Ethel B.	1889			
Hockley, Kate	1889	A		
Holland, Ada R.	1892	A	D F	
later Mrs. Sachs.				
Hope, Mary	1885			
Horton, Sarah Elizabeth Roberts	1890	B	E	
Hough, Ruby St. Clair	1899			
How, Beatrice	1889		DEF	
cf How, Julia Beatrice				

Howlett, Rosa	1889	C
Hudson, Hilda M.	1900	
Hudson, Mary	1885	
Hughes, Lily Jones	1894	AB D F
Hughes, Mary	1889	A
Hughes, Mildred	1898	
Hunt, Isabella M.	1892	
Hyde, Constance	1898	
Jackson, Cara	1888	A
Jackson, Edith M.	1887	
Jaques, Lilian A.	1892	
Jay, Cecil	1899	d
Jex-Blake, Evangeline	1891	A
Johnson, Esther		
see under George, Esther H.		
Johnston, I. Eva	1889	
Jones, Charlotte E.	1898	
Jones, Janet Mansell	1896	
Jones, Jessie H.	1897	
Jones, Laura Edwardes		
see under Edwardes-Jones		
Keighley, Maud	1892	
Kemp-Welch, Edith M.	1892	CD
Kemp-Welch, Lucy Elizabeth	1892	ABCDEF
Kemp-Welch, Margaret	1891	BCDEF
Kenrick, Kate	1889	
King, Bertha	1894	C
S. African artist		
(Bertha Everard nee King)		
Kingsley, Jessie M. (or J. T. ?)		A
became Mrs. Tarpey	1883	
Knight, Adah W.	1883	A D F
Knight, Annie	1885	A
Knowles, Louisa	1889	
Kraftmeier, Marta	1890	A
Kranichfeld, Ermengarda von	1895	
Lawford, Lulu	1895	
Leckie, Edith E.	1889	
Lee Smith, Marianne		
see under Smith, but		
compare with Leesmith M. L.		
Leesmith, Mary Lascelles	1890	ABC
m. George Harcourt (q. v.)		
Leighton, C. Barbara	1898	
Le Mesurier, Eva	1888	C
Le Sage, Clara	1888	
Leveson, Dorothy	1890	
Ley, Margaret	1899	
Little, Emily	1883	A
Lodwick, Leila M.	1891	
Login, Helen M.	1892	
Luker, Louis Harriet	1900	
Luxmoore, Myra E.	1885	A D F
MacEwan, Mary P.	1896	
Maclean, Mary S.	1883	
Maggs, Emily M.	1895	
Malcolm, Beatrice	1886	
Marshall, Winifred	1890	D F
Marsham, Grace M.	1896	
Martin, Emily Kate	1900	
Martin, Marguerite	1896	
Mason, Janet M.	1893	B E
m. B. A. Haughton (q. v.)		
Matheson, Margaret	1893	
Maw, Cecilia	1899	
Maxfield, Annie	1889	
Maxwell, Winifred	1894	
May, Florence	1894	
Maynard, Elizabeth F.	1899	
McCoy, Alice Mary	1899	
McInroy, Patricia	1886	
Menzies, Mary Beryl	1899	
Metcalfe, Emily E.	1883	
Michell, Beatrice E.	1892	
Milner, Annie E.	1893	
Milner, E. Eleanor	1888	ABCDE
Milnes, Annie	1888	A C
Moll, Florence	1895	
Moore, Leslie	1897	
Mott, Rosalind D.	1886	C
Moxon, Lilian M.	1898	
Muntz, Josephine	1893	
Musgrove, Vestalinde	1893	
Mylton, Charlotte I.	1898	

Napier, Violet	1895	
Nathan, Fanny	1886	A
Neame, Emmeline A.	1892	C
Norie, Marie L.	1887	C
m. D. A. Wehrschmidt (q. v.)		
Norstrand, Ragna A.	1900	
Nunnerley, Alice Maude	1889	
Nutter, Helen B.	1890	
died before 1895		
Oddie, Maude G.	1894	
Old, Eva W.	1888	
Paige, Gertrude	1893	
Peddie, Barbara	1885	A
Peel, Esther	1886	
Peel, J. Maud	1885	A
Petherick, Edith M.	1889	C
Pipe, Edith	1896	
Plaisted, Lilla M.	1885	
Pogson, Blanche	1894	
Prall, H. May	1886	C
Pryde, Mabel S. L.	1888	C
m. W. N. P. Nicholson, (q. v.)		
Quicke, Anna Mary	1895	
Quicke, Edith P.	1894	
Reader, Ethel G.	1895	
Reed, Pauline M.	1898	
Rhodes, Bertha	1899	
Rhodes Margery Parker	1895	
Richardson, Edith	1892	B
Ridley, Edith	1895	
Robertson, Helen H.	1885	A
Robinson, Emily A.	1885	
Rogers, Grace	1886	
Rowe, Gwendoline	1896	
Rowe, Ida Emily	1895	
Salter, Annie	1883	C
Saltmer, Florence A.	1886	A C
Sampson, Bertha	1896	
Sanderson, Agnes M. W.	1897	
Savill, Gertrude M.	1888	A
Sawyer, Amy	1885	A C
Schloesser, Rosie H.	1893	
Scott, Edith	1883	A
Scott, Esther P.	1890	
Semple, Eleanor	1893	
m. H. Goffey (q. v.)		
Seton, Elizabeth H.	1899	
Sharratt, Jessie	1892	
Shearer, Marie J.	1896	
Shillington, Ellen H.	1886	
Sieveking, Ella	1885	
Skinner, Florence L. E.	1895	
Sloane, Mary A.	1890	ABCD F
Smith, Ellen S.	1895	
Smith, Henrietta Maude	1887	C
Smith, Margaret Adley	1899	
Smith, Marianne Lee	1892	A
Smith, Mary Lascelles Lee		
see under Leesmith, but		
compare with Smith M. L.		
Solly, Evelyn W.	1891	A
Souttar, Anna	1892	
Sparrow, Agnes H.	1893	C
Sparrow, Evelyn	1893	C
Spence-Bate, Emily	1883	A
Spong, Annie	1888	
Stainforth, Mary I.	1900	
Steele, Fanny W.	1886	C
Stewart, Helen F.	1894	C
sister of Jane Stewart		
who m. R. Wheelwright (q. v.)		
Stobart, Amy	1888	C
Stockder, Martha	1899	
Stroud, Maud	1889	A
Sutcliffe, A. Heather	1892	
Swan, Mary E.	1885	A C
Swayne, Winifred	1895	

Sells, Violet Emily nd.
(Exh 1903-4)

Tait, Margaret A.	1893	
Tarver, Josephine	1895	C
Taylor, Alice	1888	
Taylor, Esther C.	1883	
Taylor, Fannie	1890	
Taylor, Laura Bayard	1884	
Teague, Violet	1894	e
Temple, Eleanor S.	1897	C
Tennyson, Julietta M.	1895	
Tetley, Alice	1888	
Tew, Florence P.	1894	
Thomas, Charlotte H.	1885	
Thomas, Percy E. Flora		
see under Male Students		
Thomson, Laura	1889	
Thorneley, Dorothea M.	1899	
Thornton, Mary J.	1885	C
Tichener, Edith Nina	1896	
Trevithick, Joan I.	1899	
Turner, Katherine	1892	C
Underwood, Annie	1900	B D F
Van Alpen, Antoinette	1899	
Vollmer, Hilda	1899	
Waddington, Georgina M.	1885	C
Wale, Fanny L.	1885	
Walford, Amy I.	1883	A C
Walker, Mary A.	1890	
Walters, Lucy	1887	C
Warn, Elizabeth Baldwin	1895	F
Watson, Alice A.	1896	
Watson, Minnie A.	1886	d
cf. Bolingbroke, Minna		
(nee Watson)		
Watt, Caroline	1890	
Webling, Ethel	1884	A
Weston, Lucy Edith	1899	
Whalley, Lilian M.	1892	A
Whelpton, Gertrude	1891	
White, Diana	1892	
White, Isabel G.	1889	A C
White, Mabel	1891	d
cf White, H. Mabel		
Whitehead, Amy E.	1892	A
Whiteman, Clare Lilian	1899	
Wilkinson, Clementine	1900	
Wilkinson, Maud I.	1896	C
Williams, Juliet Nora	1898	BC E
Wilson, Kathleen	1896	
Wood, Dorothea M.	1896	
Wood, Ethel M.	1897	
Woodforde, Millicent L.	1900	
Woodhead, Beatrice	1898	C
Worthington, Edith M.	1889	
Wyker, Jane Cowan	1886	A

TRANSCRIPT OF THE HERKOMER SCHOOL PROSPECTUS FOR 1890-91.



The Herkomer School, Bushey, Hertfordshire.

Founded 1883.

Incorporated 1887.

PRESIDENT - PROFESSOR HERKOMER,
M.A., A.R.A.
(Slade Professor of the University of Oxford)

TREASURER - T. ECCLESTON GIBB.

SESSION 1890-91

COUNCIL.

Ex-officio.

The President of the School.

The Treasurer of the School.

Representing the fellows.

Sir Julian Goldsmid, Bart., M. P., J. P.

x Miss Annie C. Salter.

Representing the associates.

† W. Lockart Bogle.

† William Henderson.

Representing the scholars and students.

† C. Laurence Burns.

† Miss Helen Cridland.

Elected by the Council.

J. Derby Allcroft, F. R. G. S., F. R. A. S.

Alfred Davenport. M. A.

xx Lorenz Herkomer

H. L. W. Lawson, M. P., M. A., J. P.

Mrs Elizabeth Salter.

xx Edwin G. Salter.

Honorary Solicitors.

Messrs. Cunliffes and Davenport.

Honorary Auditors.

Messrs. Quilter, Welton and Co.

Honorary Architect.

Edwin G. Salter.

Honorary Medical Officer.

James Adams Clarke, L. K. Q. C. P. I.

L. K. C. S. I.

Bankers.

London and Westminster Bank

Assistant Master.

x Daniel A. Wehrschmidt.

Secretary and Registrar.

Charles H. Thomas.

x Fellows of the School

† Associates of the School

xx Honorary Fellows of the School.

PROSPECTUS.

SITUATION - The School is situated at Bushey, in the County of Hertfordshire, on the main road from London to Watford - being about thirteen miles from the former and one mile from the latter. The Bushey Station on the London and North Western Railway Main Line is within easy walking distance of the school.

OBJECTS - The School was founded in November 1883, to promote the education of a limited number of persons of both sexes in painting, drawing and the kindred Arts.

QUALIFICATIONS FOR ENTRANCE - Candidates for admission must show proficiency in drawing the head from life. Only such Students are accepted who intend to make Art a profession. Married ladies and ladies above the age of 28 are not eligible for admission.

SYSTEM OF WORK - The system of work has been formulated with a view to the Student obtaining a thorough knowledge of drawing and painting from the living model. For this purpose the School is divided into two Classes, the Life Class and the Preliminary Class. Students are required to go through the Preliminary Class before working in the Life Class; the object being that they may obtain an insight into the system of teaching before coming under the more immediate instruction of Professor Herkomer. The Life Class is entirely under the instruction of Professor Herkomer. The work done is painting and drawing from the living model (nude and draped). The Preliminary Class is under the supervision of the Assistant Master (Mr. D. A. Wehrschmidt, F.H.S.) The work done in this Class is drawing and painting the head from life and drawing from the cast. The method by which Students are passed from the Preliminary Class to the Life Class is as follows:- Twice in each Term the Preliminary Students who are sufficiently advanced, are required to make a study of the living model (nude) in black and white, two hours daily for five days being employed in the study. When the studies are completed they are laid before Professor Herkomer without any distinguishing marks, and he examines them and passes or rejects them on their merits. Male and Female Students work together in the Preliminary Class, but separately in the Life Class.

MODE OF ADMISSION - Applicants for admission must send examples of their work. At least three studies in colour or black and white (charcoal on white paper) should be sent either of the human figure (nude) or of the head from life, but in the latter case the specimen study should be life size. Applications for admission can be made at any time, and accepted Students will be admitted according to priority of application.

TERMS - The Session is nine months, divided into three Terms of twelve weeks each. The Terms will commence and end during Session 1890-91 on the following dates:-

First Term - 29th September to 20th December, 1890.
Second Term - 5th January to 28th March, 1891
Third Term - 6th April to 27th June, 1891.

Two weeks at the end of each Term are vacations.

All Students are expected to study in the School for at least one whole session.

HOURS OF WORK &c. - The hours of work are as follows:- During the Winter Months (October to March) the School opens at 9 o'clock, and the Preliminary Class works from 9.30. to 5.30., with one hour for luncheon at 12.30. The Life Class works from 9.30. to 3., with half an hour recess at 12.30., and in the evening from 7 to 9. On Saturdays the Classes work from 9. to 12.

During the Summer months (April to July) the school opens at 7.30. and the Classes work from 8 to 4., with one hour for luncheon at 12 o'clock.

On Saturdays the Classes work from 8.30. to 11.30. Intervals of ten minutes are allowed at each hour, when the models rest.

All Students are expected to attend the School daily, and work during the hours fixed, unless ill-health prevents, or they have the consent of Professor Herkomer to be absent. A Register of Attendance is kept, and absence from the School will be recorded and placed against the Student's chances for re-admission in any subsequent Term.

FEES - The School Fee is £6. 6s. per Term, which includes use of models, Library, Reading-room, and all School appliances (easels, stools &c.) during School hours. The Fee is payable in advance, and no Student is allowed to commence work until it is paid. A Student can join at any time during a term but the full Fee must be paid. Students who have worked a complete Session (nine months) in the Life Class are allowed to join for a shorter period than a Term at a proportionate fee.

RESIDENCE - All Students are required to reside in Bushey, or within easy distance of the School.

The majority of Students reside in the houses of the villagers, where rooms can be obtained at the following charges:-

Two furnished rooms, with attendance, from 10s. to 12s. per week.
One furnished (bed and sitting-room combined) from 6s. to 8s. per week.

The rooms are in all cases under the supervision of the School authorities, but the management is entirely under the Student's control.

There are also a few residents in the village who take lady Students as boarders at reasonable charges. A register of suitable rooms is kept by the Secretary.

SCHOLARSHIPS - There are four Open Scholarships (two for male and two for female Students), and at least one vacancy will occur in each year for a Scholar who will receive free tuition and residence, of the value of £40. for one Session.

No candidate will be qualified for election until he or she has worked for one Session in the School, and until the Council are satisfied that the Student's circumstances require such assistance.

A renewal of the Scholarship may be made for a second Session if the attendance and progress of the Scholar is satisfactory.

The vacancies that may occur will be declared by the Council as soon as possible after the end of each Session.

The Scholarships are held from the commencement of the Session.

VISITORS - Intending Students desiring to see the school must send specimens of their work in the first instance, and if they are accepted they will be allowed to visit the School before deciding to study there. Other persons wishing to visit the School must write to the Secretary for the necessary permission, and inform him the purpose of the visit.

MATERIALS - All necessary working materials (colours, canvas, brushes &c.) can be purchased on the premises.

LECTURES - During each Term Lectures are given by the Professor in different branches of Art Education, which are open to all Students past and present.

LIBRARY AND READING ROOM - The Reading Room is supplied with the Daily Papers and Monthly Magazines and is open for the use of Students to 10 p.m., daily. There is also a small Library for the use of Students.

The Tennis Lawn and grounds attached to the School are open at all times for the use of Students.

All specimen drawings sent for inspection, and application for Prospectuses, or other information, should be addressed to the Secretary.

Extract from the statement by George Harcourt submitted to Parliament in 1897 in protest against the proposed Watford, Edgware and London Railway.

... "The Herkomer School for Artists is the only school of the description in the United Kingdom. There are of course numerous schools of Art in London and various provincial towns but this is the only school of importance established in a rural district. From an Artist's point of view Bushey is peculiarly attractive. The School of course is the principal feature but, apart from this, the rural character of the District, the uninterrupted landscape, the quiet and other surrounding charms of the country are everything that can be desired. It is owing to these advantages that the well known artistic colony has sprung up in Bushey during the last few years.

Bushey is now for the most part populated by Artists or Art Students, not only are they householders to a considerable extent but they are distributed all over the Village and neighbourhood wherein lodgings are to be found, and it is estimated that nearly 200 people are permanently engaged in this profession in and around Bushey.

This number is considerably increased in the summer months by Artists and Students coming to the School for the Summer Term of instruction. The advantages for sketching provided by the surrounding country causes them to settle in the Village where they take rooms and remain, even after the course of instruction, often for months pursuing their work, and there is not the slightest doubt that the shopkeepers and tradespeople and small householders generally in Bushey are mainly dependent upon the Artists for their livelihood"...

SELECTED BIBLIOGRAPHY.

1. Works by and about Herkomer, particularly "My School and My Gospel" by Herkomer, (Constable 1908). (These are listed in Bushey's Painting Heritage by H. C. White, most are also listed together with minor references in 'Allgemeines Lexicon' (source D).
2. A Dictionary of Victorian Landscape Painters by Sidney H. Paviere (F. Lewis, Publishers Ltd) (Adams W.D.; Ashton W.; Brown A.; Crawford J.C.H.; D'Urban W.; Ford H.J.; Gynge A(?); Haughton B.A.; Inchbold S.; Izard E.; Knowles F. Mc G.; Morris C.G.; Mulock F.C.; Paul P.P.; Rolt V.C.; Skinner E.F.; Whiteley J.W.)
Ashford Miss E.M.; Donald-Smith Miss H.; Salter Miss F.A.; Sloane Miss M.A.
3. Dictionary of British Artists working 1900-1950. by Grant M. Waters. (Eastbourne Fine Art, 1975.)
Fidler H.; Kortright H.S.; Mostyn T.; Titcombe W.H.Y.; Young W.B.
Donald-Smith Miss H.; Kemp-Welch Miss L.E.
Kemp-Welch Miss M.; Williams Miss J.N.
4. The Homelovers Book. Edited by Warren E. Cox. Published by Frost and Reed, Bristol and London. Editions of 1939 and 1949 consulted. Contains brief biographies of:
Brown A.; Crawford T.H.; Hirst N.; and Milner Miss E.E.

OTHER PUBLICATIONS ASSOCIATED WITH BUSHEY.

Bushey's Painting Heritage by H. C. White
64 pages, 50 illustrations. £1-00
Brief notes about some of the very many outstanding artists and some of the lesser known artists associated with Bushey through the Monro circle, the Herkomer School and the Lucy Kemp-Welch School etc.

Dr. Monro and Rector Vivian 1800-1830.
by Grant Longman. 24 pp. 8 illus. 25p
Describes life in Bushey and the comings and goings of the artists patronised by Dr. Monro whilst he lived at Merry Hill, Bushey. The illustrations are of works by W.H. Hunt.

A sequel to this reference paper is in preparation, viz :-
'The Herkomer Art School, 1901-1904 and subsequent developments.'

These and other publications obtainable from :

E.G. Longman

and

Lesley Enstone, Bookseller.
"THE OPEN BOOK",
4, Ye Corner, Aldenham Rd, Oxhey,
WATFORD, Herts.

